



30 Watt Monocrystalline Bendable Photovoltaic Module

Made with high efficiency back-contact solar cells

Electrical Characteristics

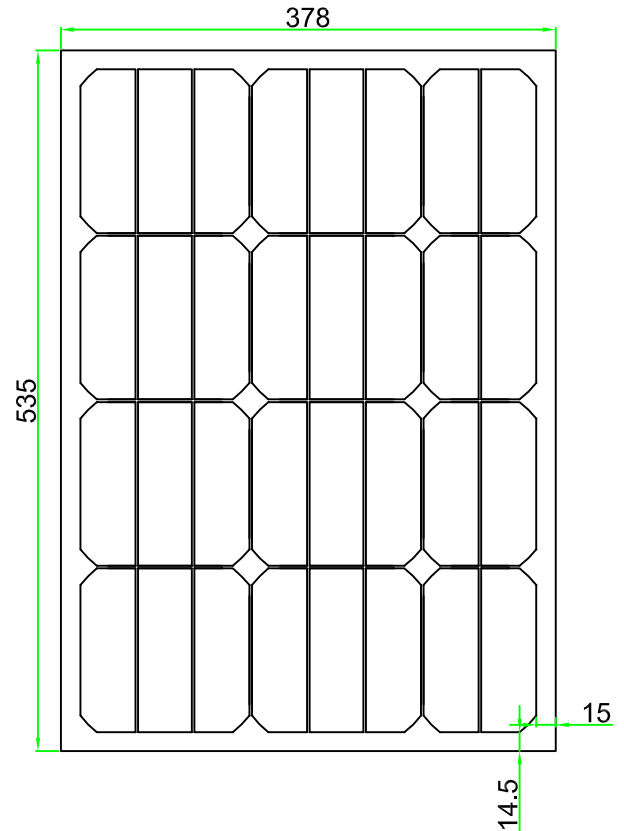
Max Power	Pmax	30W
Max Power Voltage	Vmp	17.6V
Max Power Current	Imp	1.70A
Open Circuit Voltage	Voc	21.2V
Short Circuit Current	Isc	1.83A
Maximum System Voltage		600V
Series Fuse Rating		10A

Temperature Co-efficients

Power	-0.38%/°C
Voltage	-60.8mV/°C
Current	2.2mA/°C

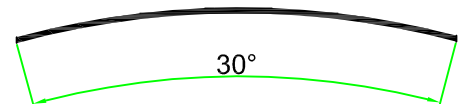
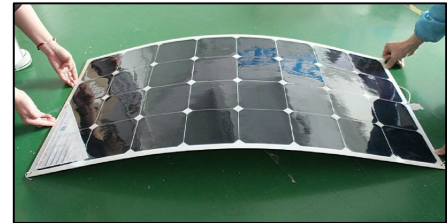
Cell Efficiency	19.6%
Number of Cells in Series	32
Max Power tolerance	±5%

Dimensions

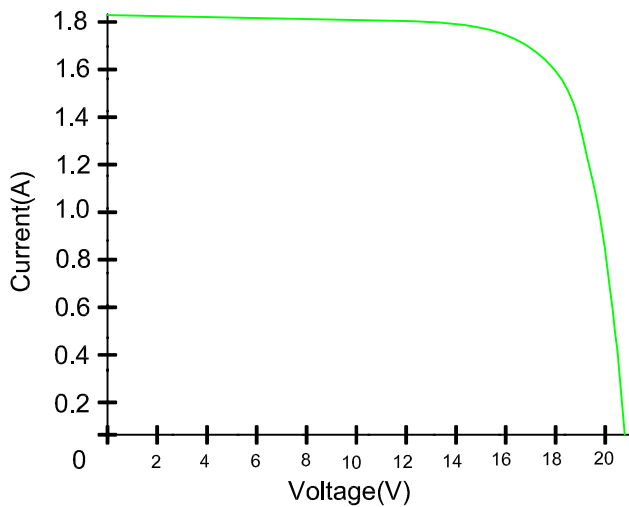


Mechanical Characteristics

Weight	0.49KG
Dimension	535*378*3



Maximum recommended bending degree:30 degree



Note:All electrical parameters are rated at standard test conditions (irradiance of 1000W/m²,AM 1.5G,cell temperature 77°F/25°C)

Address:

SHENZHEN SACRED INDUSTRY CO.,LTD

3#, No.1 Building, Longda Industrial Zone, Huating Road, Dalang Community Bao'an District, Shenzhen China.

GUANGXI SACRED NEW ENERGY CO.,LTD (Factory in Nanning, Guangxi Province)

6th floor, Building 5, Stage Two of Technology Hatching Base of Enterprise of Association of Southeast Asian Nations,

No.3 Zongbu Road, Nanning Guangxi Province.

Tel:86-771-3236755 3236355

Tel:86-755-82507899

Fax:86-755-83588199

Fax:86-771-3236755

Website:www.sacredsolar.com